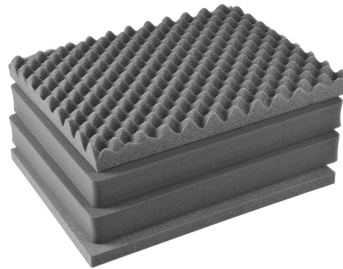


4-piece foam for Peli™ 1600 suitcase



Pre-cut foam kit for 1600 Protector Case - Custom protection

This pre-cut foam kit is the ideal solution for those wishing to customize the interior of their 1600EU Protector Case. Designed for easy and precise cutting, this **Pick N Pluck** system allows you to perfectly adapt the foam to the shape of your sensitive objects: cameras, drones, measuring instruments, weapons, etc.

With layers of foam pre-cut into small cubes, you simply position your equipment, mark the contours with tape or chalk, then remove the cubes by hand to create custom compartments. A simple, quick and effective fit to guarantee **optimum protection against shock and vibration**.

Technical specifications:

- **Compatibility:** 1600EU Protector Case
- **Material:** High-density polyurethane
- **Total thickness:** approx. 19.6 cm
- **Kit contents:**

1 convoluted foam (wave-shaped foam) for the lid - **5.1 cm**

2 Pick N Pluck foams for the base - **6 cm thick each**, with pre-cut cubes measuring **1.27 x 1.27 cm (0.50" x 0.50")**

1 solid foam for base - **2.5 cm thick**

Advantages :

- **Easy customization:** tool-free cutting thanks to Pick N Pluck system
- **Maximum protection:** Effectively absorbs shocks and holds objects in place
- **Quick installation:** No technical skills required
- **Long-lasting:** Wear-resistant foam designed for intensive use
- **Versatility:** Suitable for a wide range of valuable or fragile objects

Usage:

1. **Place your equipment** on the Pick N Pluck foam.
2. **Trace the outline** with tape or chalk.
3. **Gently remove** the foam cubes according to the outline.
4. **Test fit** and adjust if necessary.
5. **Assemble the layers** in your suitcase: solid foam on the bottom, cut foam in the middle, convoluted foam on the lid.

?? **Important:** Leave **at least 2.5 cm (1 inch)** of foam space between your equipment and the case walls for optimum protection.

The foam kit for suitcase 1600 is **the ideal solution for transporting your equipment in complete safety**. Its simple, adaptable design allows **quick, customized shaping**, while ensuring **excellent shock absorption**. Perfect for professionals and discerning individuals alike, this kit transforms your suitcase into a tailor-made protective case.