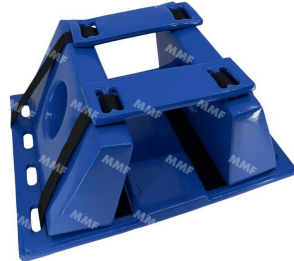


Headrest for hard surfaces - Professional cervical immobilization



The **hard surface head support** is an essential immobilization device for the care of victims in emergency situations. Used in conjunction with a hard surface, it provides **effective support for the head and cervical spine**, limiting any movement likely to aggravate an injury.

Designed to meet the needs of **rescue** professionals, this model features a **rigid, wrap-around structure** and **ergonomic side blocks** for optimum head support, even in difficult conditions.

Secure design and support

The headrest is equipped with **two reinforced side supports** to stabilize the victim's head. Immobilization is completed by **adjustable straps**, enabling rapid, secure adjustment at the front.

Its one-piece design offers excellent mechanical resistance, while guaranteeing **rapid installation** on any standard hard surface. Side openings facilitate the passage of straps and enhance compatibility with existing equipment.

Materials for operational environments

Made from **robust polymer material**, this headrest is designed for intensive use. Its surface is **waterproof, washable and resistant to disinfectants**, meeting the requirements of medical and rescue environments.

Its structure also allows it to be **used in damp or contaminated environments** without compromising its performance.

Differences from other immobilization devices

The hard surface headrest differs from other immobilization solutions in its speed and effectiveness:

Cervical collar: partial neck support, insufficient to fully immobilize the head.

Immobilizing mattress: complete solution, but heavier and more time-consuming to implement.

Hard surface alone: stabilizes the body without providing lateral support for the head.

Head restraint: essential additional solution to ensure **complete cervical immobilization** and safe transport of the victim.

Operational benefits

- **Fast, effective head immobilization**
- **Compatible with standard hard surfaces**
- **Adjustable straps for secure support**
- **Rigid, durable structure**
- **Easy to clean and disinfect**

Fields of application

The **hard surface headrest** is used by professionals in :

- Fire and rescue services (SDIS)
- Medical transport and ambulances
- Hospitals and medical facilities
- Industry and high-risk sites
- First aid training organizations

A complete range of emergency equipment with MMF

MMF offers a complete range of equipment dedicated to **immobilization and emergency rescue**, including hard surfaces, carrying devices and associated accessories. This approach guarantees **optimum equipment compatibility** and meets the requirements of professionals in the field.

MMF's aim is to **offer a complete, reliable range of products, in line with market standards**, to support rescue, safety and medical professionals in their day-to-day operations.

MMF expertise

Thanks to its experience in technical and safety equipment, MMF selects products that meet strict criteria of **performance, robustness and conformity**. The solutions we propose are adapted to the constraints of the field and the requirements of emergency response operations.