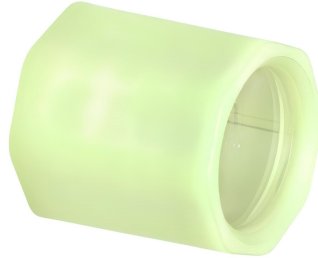


## Photoluminescent head for Peli™ Sabrelite 2000 - 2000Z1 - 2000N lamps



### Essential accessory for locating in dark areas

Distributed by **MMF Protection et Sécurité** this **photoluminescent head** improves the visibility of your flashlight when working in low-light conditions or with power outages. Easy to install, it remains visible even without an active power source.

### Key feature: easy identification

Made from high-quality photoluminescent material, this head recharges using ambient light and emits a persistent glow in the dark. This enables you to locate your lamp quickly, a valuable asset for firefighters, rescue teams or security guards on a mission.

### Technical specifications

- Compatibility: Sabrelite flashlights [Peli™ 2000](#), [Peli™ 2000Z1](#), [Peli™ 2000N](#)
- Color: photoluminescent, visible in the dark after exposure
- Installation: simple screw-in replacement for original head

### Recommended applications

Perfect for responders in dark environments - firefighters, rescue services, civil security - this photoluminescent head guarantees quick location of your flashlight in the most critical conditions.

### Distribution MMF Protection et Sécurité

This essential spare part is offered by **MMF Protection et Sécurité** a specialist in reliable emergency lighting solutions.