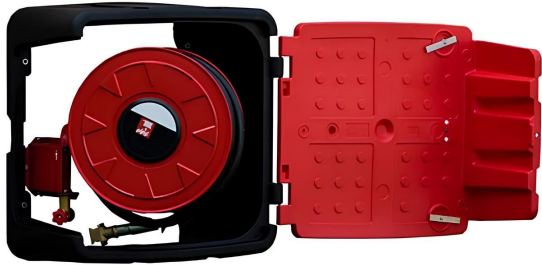


Bottomless case for R.I.A swivel



Product features:

Reference: 38733

EAN13: -

Wall cabinet for fire hose reel - open at the back

This wall-mounted cabinet has been specially designed to accommodate an armored fire valve (fire hose reel) equipped with a hose reel up to 750 mm in diameter. Robust, light and resistant, it is perfectly suited to industrial, tertiary or public environments, where fire protection must be fast and effective.

The body is molded in high-density polyethylene, offering high resistance to impact, weathering and corrosion, while being considerably lighter than conventional metal enclosures.

Designed for rapid access and immediate intervention

The cabinet features an L-shaped hinged door that opens to a full 140°, providing easy access to the reel and valve in an emergency. Thanks to its open bottom, installation and wall connection of fire hose reel are simple and straightforward.

Safety and versatility

This cabinet for fire hose reel is suitable for both indoor and outdoor installation. It features a secure locking system with glass breakage and the option of adding a padlock or anti-intrusion strap. An automotive-grade rubber gasket seals the door against water and dust.

Depending on site requirements, the door can be configured to open to the left or right. Customization options (color, logo, pictogram) are available for bulk orders.

Technical specifications

Exterior dimensions: 1000 × 1000 × 480 mm

Interior dimensions: 800 × 820 × 435 mm

Weight: approx. 21.5 kg

Opening: 140° swivel, left or right hinge
Mounting: wall-mounted
Compatibility: hose reels up to Ø750 mm

Areas of use

The cabinet is ideal for warehouses, parking lots, public buildings, industrial sites, logistics platforms or sensitive areas requiring an accessible, protected fire system.