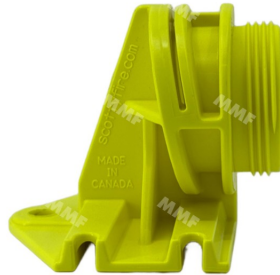


Peacock tail water curtain 56L/min DN40 1"1/2 BSP male



SCOTTY WATER CURTAIN - 56 / 113 / 190 L/min - 1"1/2 BSP male thread (without fitting)

The **Scotty Water Curtain** is an innovative device for creating a wall of water to effectively humidify and protect areas exposed to flames and heat. Designed for use with a pressurized water line, it generates a powerful water barrier, ideal for fire-fighting interventions and preventive protection of sensitive infrastructure.

Technical specifications:

- **Available flow rates:**
 - 56 L/min (15 GPM)
 - 113 L/min (30 GPM)
 - 190 L/min (50 GPM)
- **Water wall dimensions:** up to 12 m wide and 6 m high (depending on flow rate used).
- **Fixing:** quick installation with three screws or a single stake for optimum stabilization.
- **Connection:** 1"1/2 BSP male thread. Other versions available with double female connector.
- **Materials:** resistant and durable for use in extreme conditions.

Advantages :

- **Effective protection:** limits flame propagation, reduces thermal intensity.
- **Fast installation:** simple, safe installation in just a few minutes.
- **Versatility:** suitable for firefighters, high-risk industries and sensitive areas.
- **Water savings:** consumption optimized according to need.
- **Robustness:** designed to withstand harsh environments and intense heat.

Applications :

- **Fire services:** active protection during response operations.
- **Industrial sites:** enhanced safety in high-risk areas.
- **Residential and commercial areas:** prevention during dry spells.
- **Outdoor events:** improved thermal comfort and fire safety.